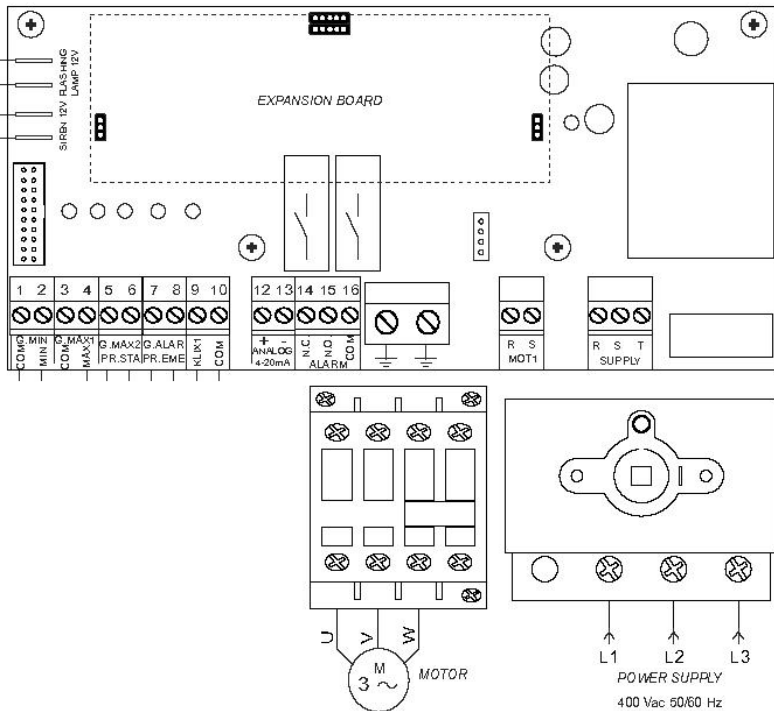


# MULTIPLUS PANEL QUICKSTART

## Three Phase 400 Volt

To be read in conjunction with the Installation Manual



### WIRING

1. Bridge terminals 1 and 2 or connect a float switch
2. Connect motor.
3. Connect mains power supply

### SETUP

1. Close and switch on the panel main isolator.
2. Press PAGE<sup>▲</sup> + MAN<sup>▼</sup> within 8 sec to enter setup menu.
3. Change language to English by pressing ENTER then the PAGE<sup>▲</sup> Button.
4. Press PAGE<sup>▲</sup> to view Application (Should be Cos Phi Default).
5. Press PAGE<sup>▲</sup> to select AUTO LEARNING.
6. Press ENTER to start AUTO LEARNING.
7. Press ESC for minimum 2 sec to EXIT.



Auto Learning will have captured motor current and cos Phi settings. All other setting can be accessed by pressing PAGE<sup>▲</sup> and Enter to change but this should not be necessary for a simple borehole application setup. Refer to the main Installation Manual for further information and wiring diagrams.

### OPERATION

1. Press PAGE<sup>▲</sup>
2. To start press MAN<sup>▼</sup> for manual operation or AUT
3. Top Stop Press 0 (ESC)

For further assistance contact Proquip Direct T 0208 712 5982 Version 1 March 2019