

# STAINLESS STEEL WELLHEADS



**proquip**  
DIRECT LTD

## HARD-WEARING, HYGENIC & COMPLIANT PROTECTION FOR YOUR WELLHEAD

### ▶ FEATURES & BENEFITS

- Save time fabricating bespoke wellheads for your boreholes.
- Provide a zero maintenance service life that will last as long as the borehole itself.
- Bring a neat, professional look to any borehole, befitting the pump-set, and vital water reserves within.
- Bolt down to the well chamber or grout in position to form a strong, tidy seal.
- Completely fabricated in 304 Stainless Steel.
- Corrosion free.
- Will suit up to 6" diameter casings.
- Available ex - stock ready to ship - give us a call.



There's every pressure to get your wellheads right, but in reality they can be a hassle.

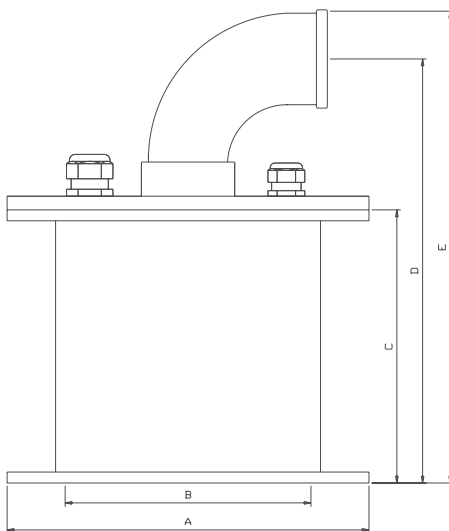
Borehole installations at the surface present very differently, so it can be tricky and time-consuming to get a firm interface and good seal when making up solutions on site.

Now you can assure hard-wearing, hygienic and compliant protection for your wellhead for far less than you think, with Proquip's all Stainless Steel Wellheads.

The borehole casing with pump and rising main locate readily into the wellhead tube which bolts down onto the wellhead chamber or can be grouted in position to form a strong, tidy seal. The load from the pump and rising main is fully supported by the wellhead assembly and not by the casing.

At a price similar to that of an epoxy-coated mild steel equivalent, insignificant within the overall cost of a borehole, this is an investment that is easily justified while adding a professional high quality finish to the completed system.

Compact, robust, smart and purpose-made, they'll save you time and money while delivering all the quality and performance associated with the Proquip Direct product stable.



### STANDARD SPECIFICATION

Body Materials: 304 Stainless Steel  
Gland Materials: Polypropylene

Vent / Dip tube port  
Gasket: Rubber

### OPTIONS:

Pressure Gauge  
Sample Tap

Air Valve  
Non Return Valve

Custom Fabrication  
Options on request

SIZE	A	B	C	D	E	MAXIMUM WELL CASING DIA.	POWER CABLE GLAND ID	PROBE CABLE GLAND ID	WEIGHT
1½"	265	175	210	290	325	170 OD	16	12	18KG
2"	265	175	210	290	325	170 OD	16	12	18KG

All dimensions in mm unless otherwise shown

**CONTACT  
US TODAY**

Proquip Direct Limited, Unit 34 Silverwing Ind Est. Imperial Way, Croydon, Surrey, CR0 4RR

Tel: 020 8712 5982 Fax: 020 8712 5983 sales@proquipdirect.com www.proquipdirect.com

Registered in England and Wales No.3464096 VAT No.706953812

Copyright © 2016 Proquip Direct Ltd. All Rights Reserved.

