

BORELINE

the flexible rising main



Brought to you by



BORELINE is a premium quality flexible rising main that has been used throughout the world by water companies and in mining, agricultural, industrial and domestic applications since 1990.

Unlike rigid steel or plastic risers, **BORELINE** is supplied on a handy roll so is easy to deliver and to install in the most restricted of spaces – and, unlike mild steel risers, **BORELINE** will never rust through with the risk of losing your pump down the well.



Stainless Steel Coupling with
Break-out Plug Installed



Confined Space Boreline Installation



Ready for Despatch

Designed to be simple, safe and efficient

BORELINE is constructed using a combination of high tenacity yarns and thermoplastic materials to produce a superior product of exceptional strength and durability. It is available in an unrivalled choice of sizes – from nominal 1" (25mm) to 8" (200mm) diameter – and is supplied cut to length to suit your application.

The positive double clamping system on **BORELINE** couplings, offers a failproof system for securing the pump to the riser and the wellhead. Stainless-steel and bronze couplings are rated to the same high pressures and tensile strength as the hose – while **BORELINE'S** unique Glass Reinforced Nylon couplings are suitable for use to as much as 100m depth. All **BORELINE** couplings are specifically designed to take the full load of the pump, power cable and enclosed water – so suspension cables are NOT required.

BORELINE'S inherent low coefficient of friction means that pump power consumption may be less than with a rigid riser when new. With its resistance to clogging or corrosion, power usage will NOT increase significantly over time.

Since the early 90's investment in new materials and technology means that BORELINE remains a market leader in flexible risers worldwide.



Boreline Installation Roller

BORELINE has a 5-year Warranty and all components are reusable which saves money when considering a pump maintenance schedule. Rigid risers, though, – whether rusty steel or cheaper poly-pipe systems – can be very awkward to dismantle when removed for servicing pumps and often require complete replacement.

BORELINE is suitable for several methods of installation which is of particular benefit when installing borehole pumps in confined spaces. It can be installed by hand on shorter lengths or by using a vehicle and a roller or hoist/crane where space permits. It is the most compact system available for storage, transporting and ease of installation.

Benefits

- Light Weight.
- Fully reusable.
- Zero Maintenance.
- Excellent hydraulic performance.
- Resistant to corrosion, scaling and biological growth.
- Energy Efficient.
- Flexible during installation, rigid during operation.



200mm Diameter Boreline Installation



APPROVED BY: NSF 61 | WRAS



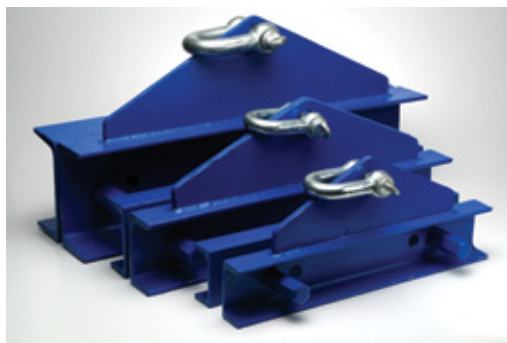
BORELINE TECHNICAL DATA

Product Code	Nominal Size		Minimum Well Diameter mm	Working Pressure bar	Bursting Pressure bar	Breaking Strength kg	Maximum Working Load kg	Coupling Torque Setting Nm	Coupling Outer Diameter mm	Coupling Weight kg	Boreline Weight kg/m	Column Weight of Water kg/m
	Inch	mm										
001-BL0025-1	1	25	76	40	85	1400	470	10	55	1	0,2	0,6
001-BL0032-1.2	1 ¼"	32	102	30	75	1700	570	10	65	1,1	0,3	1
001-BL0040-1.5	1½	40	102	30	65	3000	1000	10	75	1,5	0,33	1,94
001-BL0050-2	2	50	102*	30	65	4000	1300	12	95	3,5	0,55	2,25
001-BL0065-2.5	2½	65	152	25	60	6000	2000	20	109	5	0,85	3,32
001-BL0076-3	3	75	152	25	60	7000	2300	30	115	6,5	0,95	5,1
001-BL0102-4	4	100	203	25	58	12000	4000	30	145	8,5	1,4	9,05
001-BL0125-5	5	125	255	22	58	15000	5000	40	175	14	1,7	14,15
001-BL0154-6	6	150	305	22	58	20000	6600	45	200	16	2,5	20,35
001-BL0203-8	8	200	406	12	58	22000	7300	45	270	43	3,4	31

Minimum well diameters make no allowance for any cables or dip tubes *minimum 152mm well required when using 2" / 50mm GRN couplings

FRICITION LOSS DATA (M/100M)

Size Inch	1	2	3	4	5	6	8	10	12	15	20	25	30	40	50	70	90	100	110	130	140	150	180	210	260	270	320	400	
1	2,3	5	12																										
1,25	0,5	2	2,5	5,7	12																								
1,5			1	4	4,2	6,3																							
2						2	2,5	4,8	6,7																				
2,5							1,9	2,3	3,5	4,8	8,1																		
3								1	2	2,5	4	6,2																	
4									0,8	1	1,4	2,9	5																
5											1	1,5	2	2,2	3														
6												0,9	1,3	1,5	1,8	2,3	3,3												
8																								0,8	1	1,3	1,7	2,5	
Flow m3/h	1	2	3	5	7	9	10	14	17	20	26	30	40	50	70	90	100	110	130	140	150	180	210	260	270	320	400		



**CONTACT
PROQUIP**

Proquip Direct Limited, Unit 34 Silverwing Ind Est. Imperial Way, Croydon, Surrey, CR0 4RR
 Tel: 020 8712 5982 Fax: 020 8712 5983 sales@proquipdirect.com www.proquipdirect.com

Registered in England and Wales No.3464096 VAT No.706953812

Copyright © 2016 Proquip Direct Ltd. All Rights Reserved.